



ST JOHN'S CHURCH WORKSOP

**Building and Growing for the Glory of God
and the Good of the Community**



**St John The Evangelist
Parish Profile**

Welcome!

Thank you for considering St John's and taking the time to read through our profile. We are praying for you and it is our hope that this will help you to discern whether God is calling you to join us.



Contents

3	The Deanery
4-5	The Diocese
5-7	Priorities and Aspirations
8	The Role
9	About Us
10	Parish Statistics
11	Our Team
12-13	Our Services
14-15	Midweek Activities
16	The Buildings
17	Finances
18	The Vicarage
19	Parish History & Demographics
20-21	Workshop
22	Overseas Mission and Contacts
23-24	Appendix: The Project

Who are we?

St John's is a Bible based evangelical church, open to the moving of the Holy Spirit. Our members, many of whom are long-standing, are drawn mainly from within the local community. Most people on the electoral roll are regular worshippers who are involved in some way in the life and work of the church.

We are a diverse, united, loving, and supportive church family, friendly and welcoming to all. We are here to know and love Jesus better, make Him known, and spread His love.

We believe in the transforming power we have experienced ourselves and share with those around us.

We aim to show the love of Jesus to all: in pastoral care; through inclusion of all ages, social backgrounds and ethnicities; and through our community involvement with an outward looking focus.

We look to the Holy Spirit to lead and equip us and we rely on the proven power of prayer.

Bassetlaw & Bawtry Deanery

The furthest north in the Diocese, the Bassetlaw and Bawtry deanery is made up of 46 parishes, working together as 15 benefices, with both rural and town locations. In the main, the deanery matches the local government district of Bassetlaw, North Nottinghamshire but also includes one part of South Yorkshire in the benefice of Bawtry with Austerfield. There are three MPs: Jo White (Bassetlaw), Lee Pitcher (Doncaster East and the Isle of Axholme), and Robert Jenrick (Newark).



Our deanery serves a population of approximately 120,000 people, with a variety of backgrounds including farming, mining (in the West), and industry. Located adjacent to the Sheffield City Region and Doncaster, these conurbations provide the main employment opportunities. Connected by the A1 road, the East Coast Mainline and Lincoln/Sheffield railway lines, and nearby Doncaster/Sheffield Airport, the Deanery has ready access to London in just an hour and a half, alongside various local and international destinations.

The deanery has churches with larger and smaller numbers of attendees, vibrant market town churches, estate ministries, with many commuters working in the surrounding cities, and rural contexts. All, though, are well connected to their local communities through schools, occasional offices, community projects and a growing number of New Worshipping Communities, as well as many iconic church buildings. The churches in our deanery cover all traditions and the area is rich in Christian history with a number of churches boasting links to the Mayflower Pilgrims. This Christian heritage with the Separatists that formed the Mayflower Pilgrims, originating in the local villages of Austerfield, Scrooby, Babworth and Sturton-le-Steeple. With Worksop, being the Gateway to the Dukeries, the four historic ducal seats of Worksop Manor, Welbeck Abbey, Thoresby Hall and Clumber House are all close by and provide ample space for walks, days out and historical fact finding.

The clergy chapter, led by the Area Dean, Rev Dave Gough, works closely together and offers support to each other through regular meetings, praying together, socials and fellowship, and encourages input from the wider Diocesan leadership team with regular speakers. Deanery Synod meets three times a year with lively discussion and information sharing. All parishes within the deanery have embraced the Diocesan vision of Living Hope for the cities, towns and villages of Nottinghamshire and beyond, and proudly boast some of the beyond with parishes in South Yorkshire within our deanery. We are fully engaged and excited to be looking towards growing disciples who are compassionate, confident and courageous.

The Deanery has an administrator, who is employed by the Diocese, and, together with the Area Dean and the Deanery leadership team, they provide incumbents and parishes with practical and pastoral support. We would encourage you to consider our deanery as a great place to work and to further your ministry.

For further information about the deanery and parishes please contact our Area Dean, Dave Gough

The Diocese of Southwell and Nottingham



The Diocese of Southwell and Nottingham incorporates the City of Nottingham, the whole County of Nottinghamshire and five parishes in South Yorkshire. The population is 1.15 million – 51% live in the greater Nottingham conurbation, 31% in ex-mining areas and 18% in rural. There are 305 churches (252 parishes), served by 142 stipendiary clergy and licensed lay workers.

In 2024 we launched our refreshed vision of **Living Hope for the city, towns and villages in Nottinghamshire and beyond**. We believe the presence of thriving, growing churches across the diocese is vital for people to discover Living Hope and make the best decision anyone could ever make for their lives – to become a disciple of Jesus Christ. To enable this vision, we are committed to our mission of **Growing disciples of Christ with compassion, confidence and courage**. To support both parishes and the diocese in this we have identified 7 areas of focus: inspiring worship, reaching younger, enhancing diversity, growing leaders, enabling commitment, encouraging generosity and nurturing prayer. This vision is set out in more detail on [our website](#).

It is my hope that each worshipping community in the diocese will develop a compelling picture of its own future in God's purposes with an expectation of growing numerically and in the scope of its mission. It is my prayer that the new vicar of St John's will have the creative leadership and imagination to develop discipleship, plan for growth and reach out to the unchurched of all ages in its locality.

As you consider the role of vicar of St. John's Worksop, may I encourage you to take time to look over and reflect on our diocesan vision as part of your discernment as to whether God is calling you to be part of this diocese at this exciting time.

I look forward to welcoming the new incumbent of St. John's to join us on this faith-filled journey.

Rt Revd Paul Williams, Bishop of Southwell & Nottingham

The Diocese of Southwell and Nottingham



We find ourselves at a crucial moment for the church in relation to a changing culture. The good news of Jesus Christ is as important and life-giving as it has ever been. There are many opportunities to serve the people of Worksop with the gospel of hope in the power of the Holy Spirit. This parish has a vision to grow the church younger and to continue to build on its kingdom work for the future.

Every parish is encouraged to create its own 'Growing Disciples Plan' so that it can play a significant part in the strategic commitment to growing disciples of Jesus Christ with compassion, confidence and courage. St. John's is looking to play its part in the growth the church in the town of Worksop, as well as discerning opportunities with other Anglican churches in the town. I look forward to supporting the congregation of St. John's in its mission and welcoming a new incumbent to lead and implement the vision for the parish.

The Venerable Tors Ramsey, Archdeacon of Newark

Our Priorities

Reaching Younger People - growing new disciples particularly in younger age groups, using the potential of our links with children and young families through our midweek groups and our local schools

Growing New Leaders - drawing out gifts and developing younger leaders

Reaching Out into our community of all ages and ethnicities with our Living Hope - using the potential of our existing midweek groups and community links

Enabling Deeper Commitment - by nurturing faith filled prayer, relevant and engaging Bible teaching and facilitating nurture groups for those starting on their journey of faith

Inspiring Worship - with attractive fresh expressions of worship in our Sunday services and in new contexts

Encouraging Generosity - by continuing our pattern of generous giving to cover future ministry costs

Our Aspirations

We look forward to developing our aspirations with our new incumbent as we discern a vision for the future, but we have identified some of the areas where we see clear opportunities:

Reaching Younger People

We have strong links with our neighbourhood school and further links with another primary school in the parish. We hope to deepen those links through assemblies, after school groups, and prayer spaces. We have a good relationship with our uniformed groups and Parade Services are well attended by children and parents. We want to create more opportunities for evangelism by setting up new family friendly services/ events at a time that may suit families better than Sunday morning. Our aim is to:

- Welcome 10 new families with children a year
- Develop a weekly youth group to reach out to new young people who are currently not engaging and to equip them through whole life discipleship.
- Create an engaging space for youth to worship, learn and serve in the regular worship gatherings in the church, including Sunday services.

Growing New Leaders

We envisage a process of discerning and training, of building teams where new leaders could shadow experienced ones and eventually take over. Our aim is to:

- Discern 10 new volunteer leaders across our ministry areas, particularly looking to attract younger leaders
- Develop a leadership pipeline where our wisdom and experience can be shared with those who are new to roles
- Develop a pathway from first contact to full engagement with the church community, including leadership roles

Reaching Out into our community and enhancing diversity

We currently encompass a diverse group of people from a range of different ethnic and social backgrounds, as well as those with significant disabilities. Our midweek groups (which currently serve families, the elderly and isolated, and the marginalised on the streets), have the potential to offer opportunities to explore faith further and encourage into a life changing relationship with Jesus. Our aim is to:

- Build on our current friendship evangelism
- Create new opportunities for fresh expressions of worship within these groups



Enabling Deeper Commitment

We are ready for a fresh appraisal of our teaching patterns, a group for enquirers and more opportunities for prayer - ranging from targeting prayer to underpin our mission, to a space for a more leisurely time of waiting on God and relaxed worship

- Review our discipleship pathways to increase the opportunities for new people to explore faith
- To identify and engage with groups and courses that deepen discipleship.

Inspiring Worship

We look forward to a fresh injection of inspiration into our worship, and a drive to be adventurous with fresh expressions of faith. We aim to:

- Create a Toddler Praise, a quieter, peaceful midweek service to enable those attending Tuesdays @ 10 to connect and reconnect with God as well as a family friendly form of worship.
- Make our main Sunday morning service more attractive and appealing in order to be effective at engaging and discipling all ages, particularly with a focus on younger age groups.
- Develop fresh expressions of worship in new contexts

Encouraging Generosity

Our congregation has been incredibly generous financially during our building project. They bring items week by week to the food bank trolley and are quick to provide practical help, furniture, and household goods to those in need. We want to develop this culture of giving to encourage generosity as part of whole life discipleship and in this next season challenge ourselves to meet our commitment to meeting our full parish share.





Can you see your name here?

Could you join in our future vision of building new “living stones”?



Members of church learning about stone masonry, involving them in the project.



What we are looking for.....

Who has the gifts and experience to:

- Lead a church into growth
- Lead and inspire deeper worship
- Discern opportunities for and to plant new worshipping communities in new contexts
- Shape and lead on a vision for the future in evangelism and church growth in line with our diocesan vision, particularly in reaching younger people and further enhancing our diversity.
- See the potential which we believe we have for growth in all ages across our parish
- Provide strategic leadership in planning and implementing new initiatives
- Discern, draw out, develop gifts and grow new leaders
- Nurture a deeper prayer life
- Encourage stronger commitment through engaging relevant Bible teaching and nurture courses
- Oversee pastoral care and maintain excellent safeguarding practices
- Work well in partnership with our existing links, particularly our important connection with Green Pastures

A Person who is:

- Mature, resilient, prayerful and open to the leading of the Holy Spirit
- Passionate about evangelism and church growth across all ages and ethnicities
- Wise and understanding, a listener and encourager with a strong pastoral heart
- Personable and able to relate to people of all ages and from different backgrounds
- Compassionate with a heart for the marginalised.
- A strong empowering leader, a team builder and a team player

We welcome applications from both men and women.

The church has not had a conversation on the issues surrounding Prayers of Love and Faith but we would welcome being led through the process by our new incumbent.

The testimonies of our members exemplify our strong sense of family and how relationships in a close knit community have been forged over the years for so many of us:

“Looking back over 40+ years we have seen God at work and experienced the reality of God’s transforming power, the joy, fun and privilege of being part of the St John’s family.”

“In the last 30+ years we have been supported through the sad times with prayer and practical help, and celebrated the good times with the church family.”

‘ I have been a member of the church for over 30 years and never felt that, as a single woman, I didn’t fit in with all the couples and families. That’s testimony to the love of God within the fellowship.”

New members are drawn into this - one describes finding the church to be ‘a place full of love, laughter, learning and fellowship.”

New members describe the welcome they received:

“I received a very warm, friendly welcome from the people of St John’s who obviously had “something,” and I realised I wanted it as well.”

“I was met with such warmth and kindness, everyone was welcoming and friendly but not pushy.”

About Us

A recent Vision Morning, held by our Archdeacon and attended by 35 church members, gave us time to reflect on the journey we have taken as a church, and the route to where we want to be as we considered our strengths and celebrated all that we love and cherish about our church:

As well as our deep commitment to the Lord and each other we valued:

- The faithful service of most on our electoral roll
- The centrality of prayer and our trust in our faithful God
- Our strong Biblical teaching
- Our heart for the poor and the marginalized
- Our generosity to the church and the community
- The variety of styles of worship and music in our services
- Our well established midweek groups that build up the church and reach into the community
- The strong links and partnerships we have built up, particularly over the last few years
- The strength of our leadership team, particularly during the time without a vicar
- Sharing food and fun in social events.
- Our attractive special outreach services

Where we are now:

In 2019 we were faced with a major challenge - our church spire was found to be “at risk” and a danger to the community. We met this with much prayer and trust in God our provider. A full account can be found in the appendix.

We have seen God’s amazing provision in the massive lottery grant to restore our building. A stipulation of the grant was to run a Heritage Project. We prayed that this would be an opportunity for mission, and so it has been. We have been blessed with new worshippers, including five new families, stronger links with our local neighbourhood school and great partnerships being established with our community . Our Celebration Service in September 2024 gave the glory to God!

We acknowledge with realism, filled with faith that these will be opportunities for future growth, that our current challenges are:

- A missing age group from the mid teens to the mid thirties
- No provision for the over 11s on Sunday mornings
- No link to the secondary school and technical college in our parish
- An ageing congregation, many of whom have served in ministries for decades, and will certainly welcome new initiatives, support with prayer, finance and time, but lack the fitness and stamina we once had

Parish Statistics 2023*

Number on Electoral Roll	63
Average attendance on a usual Sunday	66 adults 9 Children
Number of communicants on Easter Day	66
Advent and Christmas Number of people attending special services for the congregations and local community	350
Number of people attending services for civic organisations and schools	250
Total in our worshipping community at the end of 2023	Adults: 89 1-9 Years: 10 10-18 Years: 4
Number of funerals in church 2023	10
Weddings	0
Thanksgiving for the birth of a child	1

* Numbers should be seen in the context of the building work on site for large portion of 2023

You will be leading a strong and diverse group of pastoral, worship and community lay leaders, interweaving and supporting their talents and promoting teamwork.

Our Team....

Jess Rudman. Church Warden. (TL)

Phill Kicks Church Warden & Licenced Lay Minister. Licensed for Funerals. (TR)

Ann Rutherford Lay Reader – Licensed for funerals. (ML)

Rosemary Arnott Lay Reader – PCC Secretary and parish administrator. (MR)

Sue Dawson PSO for St John's (BL)

John & Debbie Hodgkins. Sunday Kids church lead (BR)

St John's Church is blessed with many other able people willing to play an active part.



Above:

Toddler Group Leaders

Right:

Armour of God Project



Our Church. Our Services.

We have a long standing evangelical tradition, enriched by the charismatic renewal from its early days.

Our main Sunday service is at 10:30am. Children between the ages of 4 and 11 leave after the first part of the service for Kids Church, held in the adjacent church hall lounge - a well led and exciting group. The former choir vestry is now an attractive creche room. Once a month we have an all age service which is family focused in delivery. Currently we have a communion service once a month, led since July by the newly priested curate from our sister church St Annes.

We use Common Worship liturgy, preach from the lectionary or on a series, through the summer holiday all age services our talks were on heroes of faith from the Old Testament. Our uniformed groups are invited to special services - Harvest, Remembrance etc, and we make the most of seasonal opportunities with well attended Christingle and Carol services,



devotional services at Easter and a children's prize giving in July. Some of these events are enhanced by the choir from our local Primary School.

Our services are led creatively by our leadership team. They include film clips, video songs, quizzes, and opportunities for testimonies. Children and adults participate as well. There are rotas for Bible reading, intercessions, data projector, sound system, welcoming and serving after church coffee. Nearly all our members take their place on the rotas.

There is prayer ministry after every service and this often happens informally in the pews or coffee area too. Just over ten years ago the back area of the church was re-ordered to create a lovely space with tables and chairs for coffee and chat. This space has great potential.



Our music is a mixture of traditional hymns, newer worship songs and video songs. Live music is led by a small group of keyboard, flute and clarinet. Our rather special Brindley and Foster organ was upgraded in 1919 and has been partially restored through the heritage project. It is now also used occasionally.



Views of Organ, Coffee time, fundraising concert and church choir.

Sunday @ 6 is a small informal, cafe style service, meeting in the church hall lounge (warmer than the church!). We use video songs, have a short teaching session and share testimonies, prayer needs and pray together. This is a warm, supportive group reaching out particularly to those who have come into the church through the Drop In.

Drop in staff using our hall to prepare and serve a meal.



MIDWEEK ACTIVITIES

Tuesday @ 10

Tuesday @ 10 is a coffee morning with a focus on heritage for folk to share their stories and memories and chat about previous church connections. Our aim was for this to evolve into a space particularly for those feeling socially isolated. A new client - a non-church goer described it "like therapy, you come and sit down and chat and make new friends." We would love to start a short, peaceful service that would encourage folk to connect and reconnect with God.

Lifeline prayer and Life Groups

On Wednesday evenings we alternate between Lifeline prayer and Life Groups. Lifeline Prayer is held in the church lounge, well attended — up to 20, and led by three different couples who are not on the leadership team. We have 6 Life groups and over half the Electoral Roll belongs to them. The material for the Bible Studies is currently being prepared by our retired reader, and each group has its own mix of worship, Bible study, sharing and prayer.

Thursday Drop In - The Saviour's Cafe

From around 2006 we have run a Drop In for those who are homeless, struggling with addictions and in need of feeding. This has been an important and distinctive ministry of our church in the town.

We had difficulty reopening after the pandemic but in October 2023 we have restarted, working in partnership with Mattersey Training Centre, part of the Christian Homeless Charity, Green Pastures. The team, who have all experienced these issues themselves and can testify to the transforming power of God, bring a nourishing hot meal which is served in our large hall. They talk and pray with the clients and encourage and signpost into Christian rehab and other help. We end with a short service in the lounge of worship and amazing testimonies from the team.



Toddler Group

Our long established Toddler group meets on Friday mornings, led by church folk. We have a good mix of activities and a wide range of clients. We take them into church occasionally and many of our past members still come every year to our Christingle and Carol services. We would love to start a pushchair/toddler praise type of session and to encourage some of these families into a family friendly worship opportunity.



Friday Games Night

Once a fortnight on Friday evenings we hold a Family Games night in the church hall with refreshments, pool, table tennis, table football and board games. This is a warm friendly event and the children's friends often come too.



Mothers' Union

Our long standing Mothers' Union meets once a month, a small group who have talks on different topics, encourage each other and are a power house of prayer with their prayer chain.



Uniformed Groups

Our hall is used by Beavers, Cubs and Scouts on Monday evenings and Guides on Tuesdays. We have good relationships with these groups.

They have all participated in the heritage project and enjoy their Parade Services in church.



Picture of the heritage window created by uniformed groups

Buildings

St John's Church was built in 1869 in the Early English Style of the Gothic Revival. It was extensively face- lifted internally in the 1920s and 30s. It has a high roof and its 140 foot spire can be seen for miles around. It can seat up to 300 in traditional wooden pews. It stands in modest grounds, has a tarmac car park, grassed areas, mature trees and flower beds. There is no graveyard. The PCC has recently been granted faculties to renovate the spire, replace the two side aisle roofs and other major repairs. We have completed major repairs to the heating system and brought back into use the original pipe organ. We have up to date projection and sound systems and WiFi recently installed across all our buildings.



St John's Church Hall stands within the grounds of the church and was built in 1907 as an evangelistic Parish Institute. It consists of a large main hall, the church office, a well equipped kitchen, and a lounge added in the 70's. Upstairs is another lounge and a storeroom. Like the church porch and the nave, access is wheelchair friendly and toilets include a disabled toilet and baby changing facility.

So our church and hall are currently in a very good state of repair.



Grounds and Environment .We are a Fairtrade church and we gained a Bronze Eco Church Award Certificate in 2022, in recognition of our efforts to care for God's earth



Finances

Our accounts over the last couple of years have been very complex with the building work so this is just a summary of where we currently stand at the end of November 2024. We have only just finalised the project accounts. There will still be adjustments to be made before the year end accounts.

Extra details give a break down of the direct giving. The number of actual givers is higher because of the married couples on the commitment scheme who give as one.

St Johns Church Finances at a glance -

January 2024 to December 2024*

Income to St Johns General fund

Income from donations	£49,165
Income from other trading activities	£7203
Sundry Income	£288
Total Income	£56,656

Regular givers by direct debit	20
Total giving per month via DD	£2181 (ave.)
Average per month per giver	£109.50
Regular givers by envelopes	6
Total giving per month via envelopes	£350 (ave.)
Average per month per giver	£58.34

Expenses to St Johns General Fund

Charitable giving	£599
Church Running Cost	£27,493
Cost of Service	£1909
Expenditure on raising funds	£250
Parish Share	£34,000
Total Expenses	£64,251

Current Balances

St Johns General Fund (Unrestricted)	£6407
St Johns Reserve Fund (Unrestricted)	£11,011
Compassion Fund (Restricted)	£177
Mission Fund (Restricted)	£720
Street Church Fund (Restricted)	£690
Spire Retention (Restricted)	£11,849
Roof Fund (Restricted)	£28,958.28

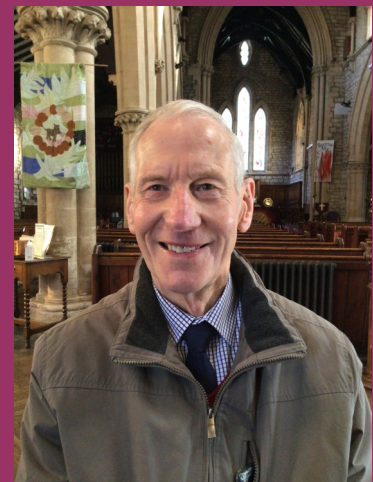
All figures are from current years accounts and are not yet audited.

* All figures correct as of 5th December 2024

Our Finance Team



Phill Rutherford —Treasurer



Ben Makeman — Gift Aid Officer



Anne Shillitto — Ass. Gift Aid

The family of St John's is very generous and to celebrate the end of the project we gave the collection to the FTHC a local based cause. We also gave the collection from Harvest to Tearfund, food brought at the time was given to Worksof foodbank, and we had a bring and share lunch.

The Vicarage



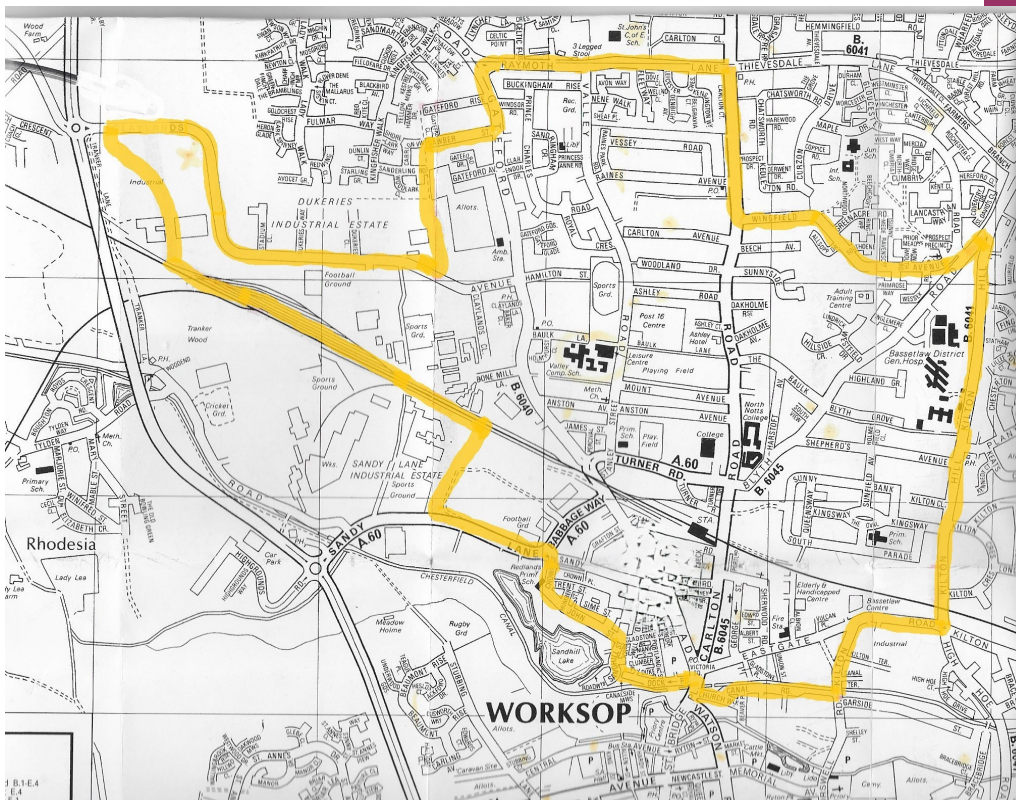
St John's Vicarage (1b Shepherds Avenue) is within the Parish, about half a mile from the church, and is an elegant 1980-built detached house. At the front door, you come into a room sized hall with the central staircase. Clockwise from the left are a large (21'x15') front-to-back lounge with patio doors, the dining-room (12'x12') which overlooks the back garden and the kitchen (12'x8'), linked with a separate utility room and back door. From the kitchen you return to the hall, from where there is a second main room (15'x15') facing the front of the house, and a downstairs toilet. Upstairs are four bedrooms, a bathroom and toilet. Outside, the private garden has many mature trees; the drive leads down from the road to a double garage.



St John's Church is just north of the town centre of Worksop. The church and parish were conceived in the early 1860s to meet the need for a church to serve the area north of the town centre, which was rapidly developing because of the opening of the Chesterfield Canal, the Railway and the sinking of Shireoaks Pit.

The church was consecrated in 1869. The main original benefactor, the Foljambe family of Osberton, transferred the patronage to the Church Pastoral Aid Society about 100 years ago to preserve its evangelical character. Similarly in the late 1970s St John's began to explore the vision for a church plant in the rapidly developing north end of our parish. Sunday services were held in community centres for some years before a plot of land was purchased in faith. In the late 1980s and early 1990s St John's gave sacrificially and

laboured on the site to build a new church, Christ Church. This opened in 1993 with around half our congregation who lived in the north end of our parish. It became a separate parish in 2006. The greatly reduced parish of St John's, which we estimate to be around 10,000, is ranked 2543 out of 12382 in overall deprivation, comprises largely Victorian and 1900s terraced housing immediately round the church, and beyond the railway line mostly 1930s semi-detached housing. It now serves a largely less affluent population - a full mix of singles, couples, families and the elderly. The area immediately opposite the church is social housing. This Sandy Lane area is one of the four most deprived "Lower Super Output Areas" of Worksop in terms of income, employment, health deprivation, disability and crime. There are significant drug and alcohol issues.



As well as social housing this area has many privately rented properties some of this housing stock is substandard. The area has a broad mix of tenant types from single people to families with Polish followed by Romanian as the main non-British ethnic groupings. Some Nigerians have moved into the area on Care Visas and five families have joined our church.

This area is a target for the United Kingdom Shared Prosperity Fund with whom we work closely. We also work with BCVS - Bassetlaw Community Voluntary Services, the Bassetlaw Food Group which provides a food bank and food hubs, and our next-door neighbour charity, From the Heart, which supports families. Our local primary school with which we have strong links, and in which the vicar used to take assemblies, is in the Sandy Lane area.

Worksop

Worksop is a market town in the Bassetlaw District of Nottinghamshire. Once a centre for mining and heavy industry it now has many newer light industries and several distribution depots and logistics companies due to its proximity to the A1 and M1. It has good rail links to Nottingham, Retford, (connecting with the East Coast Main Line), Lincoln and Sheffield and is only 15 miles from Doncaster. Worksop is surrounded by pleasant countryside. It is known as the “Gateway to the Dukeries”, because of the former ducal estates of Clumber, Welbeck, Thoresby and Worksop Manor. Clumber Park is now an extensive, popular National Trust estate, also close by are Sherwood Forest and the prehistoric Creswell Crags. A population of 43,439 (2022 Census) makes Worksop the largest town in the district of Bassetlaw, thus the administrative centre. It has many good amenities: a new bus station, a refurbished railway station, a six-screen cinema with live screenings, a small theatre, a new library, a good mix of pubs, restaurants and cafes, sports facilities, our own football team Worksop Town and many national and local charities. The town centre is benefiting from the Levelling Up Fund and a new entertainment and leisure centre is planned to include a bowling alley, climbing wall, indoor adventure play area and a cafe. There are 12 other churches in the town. Relationships between the churches tend to be informal - on Good Friday we held at United Walk of Witness through the town, we are planning a Shine the Light Carol Service in the town centre with other churches. We pray for our town centre chaplain and a Christian book stall held on market days.

Within the parish we have:

- Bassetlaw District General Hospital
- A secondary school - part of the Outwood Academy Chain with a Post 16 Centre
- A further education college
- Three primary schools
- Three care homes
- Two community centres
- Two leisure centres - one with a swimming pool
- The railway station

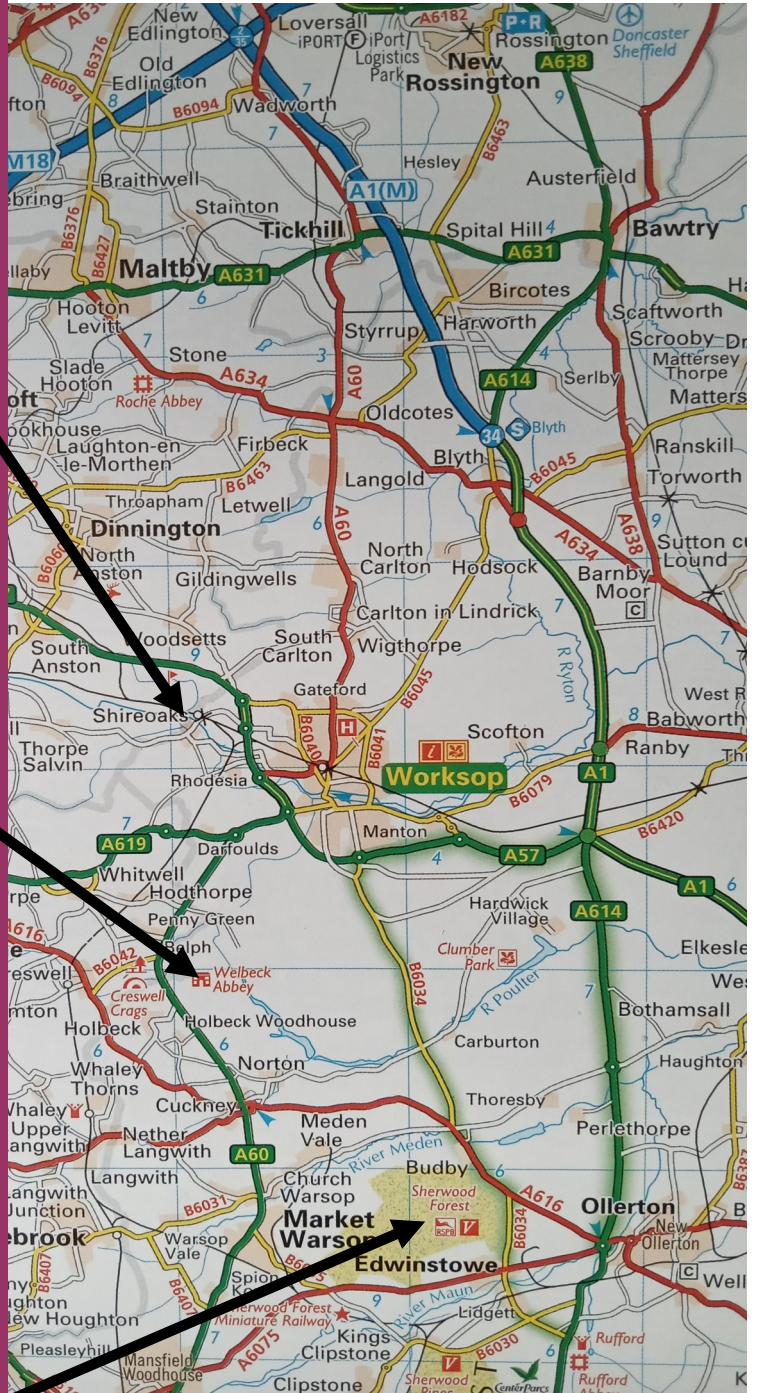
A wide range of shops, supermarkets and chain stores.

The central shopping area begins near the church and extends out of the parish to the market place and Town Hall half a mile away.

The 2021 census identifies the population of Worksop to be 43,475 with ethnic analysis of Worksop 95% White, with 2% Mixed, 1.6% Asian, 0.7% Black (mainly Caribbean).



Places around Worksop



Worksop Leisure.

From the Top.

Chesterfield Canal.

The Lion Gates Welbeck

The Major Oak at Sherwood Forest

Overseas Mission

YWAM

We have a very close strong link with Sandra Merriman who is the joint director of YWAM Uganda. She is a former member of our church and whenever she is home stays with us in Worksop. She send a weekly newsletter for our prayers.



Tearfund

Since the creation of Tearfund we have supported them, use their material and always hold at least one major fund raising event a year for them - usually their Quiz Night.



Compassion

We have for many years supported Compassion, currently we have two children - a teenage girl in Haiti and a little boy in Indonesia.

In conclusion

We are looking forward to welcoming someone who feels called by God to lead us on the next exciting stage of sharing our Living Hope with our community and growing our church further.

The Persecuted Church

Many church members support Barnabas Fund and the persecuted church is usually included in our prayers.

You can contact the church through our Churchwardens :

Jess Rudman

Tel: 01909 475368 Mob: 07970 498276

Email: jessrudman@btinternet.com

Phill Kicks

01909724633 Mob:07437356795

phillipkicks@gmail.com

Or by writing to: St John's Church office Overend Road Worksop. S80 1QG

Or contact the diocese through the office of the Archdeacon

Archdeacon Phill Williams

archd-nottm@southwell.anglican.org

cc Jo Padmore Archdeacons PA

archdeacons@southwell.anglican.org

More details about us can be found on our websites.

<https://stjohnschurchworksop.co.uk>

<https://www.achurchnearyou.com/church/17825/>

Appendix:

The Project

**This has been a major part of our church's life since the pandemic—
Here is the story.**

The poor condition of the spire was noted in the November 2017 Quinquennial survey. Because of the difficulties of carrying out a full inspection it was not till January 2020 that the main road could be closed to allow a cherry picker to be placed there.

The survey identified the spire to be in a poor and deteriorating condition with many defects, some movement and frequently falling masonry. The steeplejacks report recommended stonework repairs and replacement, securing loose stonework, repointing, removing corroded steelwork, removing vegetation and treating roots, replacing lead and re-gilding of the weather vane.

The church was placed on the Historic England's "At Risk" Register in 2021 and a grant group was established to determine how to raise the funds needed. Fund raising and extra giving started and the grant group decided after some deliberation to make a bid to the National Lottery Heritage Fund in August 2022. We were thrilled and very thankful when we were successful.

Building work began in 2023 and a heritage worker was appointed in February of that year to help us with the stipulated purposes of the grant.

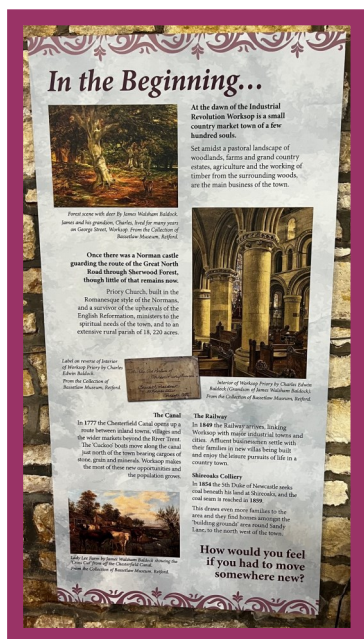
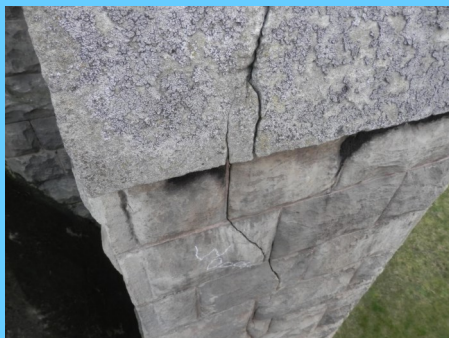
For a while the roofs of the north and south aisles of the church had been leaking during rain. This worsened and got to a point where there were many containers and buckets catching water and waterfalls down the walls. It became clear that the building could not be removed from the register if this issue was not addressed.

Building on the good interim feedback we were receiving from the lottery we approached them for an additional grant which was approved in December 2023. It is rare to be granted this and we are extremely grateful to God for his favour to us. The reroofing of the two lower roofs was finished by July 2024.

The heritage project has achieved the following amazing outcomes all achieved by volunteers and the heritage worker

- A heritage website - worksopspire.org - 875 users up to 31/08/24
- Creating a new Facebook account which has reached 15000 unique screens
- Research into the history of the church culminating in display boards and information leaflets
- Educational resources for future school visits
- Extensive research by volunteers into the names on the two war memorials
- Involving our local school in assemblies, a banner competition and two craft projects
- Involving our kids Church and Uniformed groups on a big "stained glass" window
- Providing community engagement events at the local library Fun Palace, the Christmas Tree Festival at the Priory Church and the "Bash a Brick" morning.
- Giving talks connected to the war memorials at two primary schools.
- Starting a Tuesday @ 10 coffee morning to collect family histories, local memories, hear talks on local historical issues and provide a friendly space for lonely and socially isolated folk.
- Restoring and improve the church grounds in partnership with UK shared Prosperity Fund involving 29 participants.
- Providing training in food hygiene, evaluation and digital skills for 67 participants
- In total 1622 people have directly participated in activities with a further 1100 at outreach events and 1574 online interactions. 23 volunteers have assumed new roles and the total number of volunteer hours is around 3,500
- Our secular evaluation consultant concluded that "the most profound impact has been on the lives of the individual participants. The relationships built, and the ongoing support for these individuals and groups, stand as a remarkable success of the project and a promising avenue for future church outreach."

The Pictures on this page show why the repairs were needed and the finished project



A selection of pictures showing the before and after of our spire and roof repair, including a new use for the redundant buckets and the new display boards from the project.



School Partnerships and the spire hidden under scaffolding during the restoration project.

